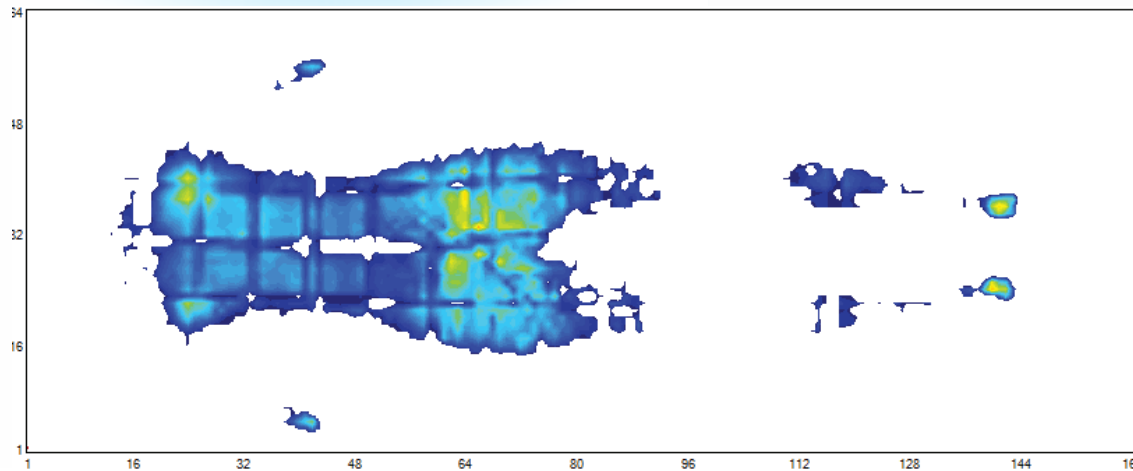
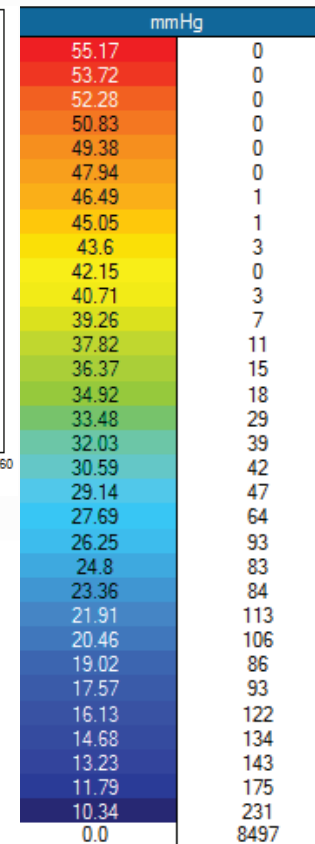


Pressure Mapping Analysis



Male 83 kg Hospital bed laid flat
Avg. Press. 19.94
Peak Press. 46.54
Min. Press. 10.36
Area (cm²) 2811.29



Sensor/Group	Value
S0123	
Avg Pres.	19.94
Peak Pres.	46.54
Min Pres.	10.36
Area (cm ²)	2811.29

RMV1998615V **Memory Foam Mattress**

Description

Memory foam mattress. Two way stretch vapour permeable cover with welded seams and zip to close (can be stitched) Profiled visco elastic (memory foam) upper surface, with supportive base. End to end. Cover or foam does not contain Latex. Flap to cover zip to prevent water ingress.

Dimensions

(L)1990 x (W)860 x (H)150 mm

Warranty

3 years

Max User Weight

171Kg/27 stones

Fire Retardancy

BS 7177 : 2008
 1996 Medium Hazard Ignition sources 0.1.5. (Crib 5), BS 6807 : 1990